

## SPARE PARTS:



**ACTIVATED CARBON FILTER:**CD. 9000000600 Complete filter with 3/4" nipples. Manufactured in light alloy and nylon this filter should be installed along the breather of the tank in the highest possible location. The activated carbons should not come into contact with the liquids contained in the tank or the surrounding water.



**MACERATOR PUMP:**Toilet waste macerator pump, 20 min. rated, can discharge tanks up to 900 litres.

- bronze macerator and rubber impeller discharge pump
- self priming up to 0.6 mt. vertical lift.
- 43 LPM output at 3 mt. total head
- macerates and discharges water and waste mixtures.

CAPACITY: 43 lt./ min.

DIMENSIONS: 240 x 130 x 90 mm

PORT CONNECTIONS: Inlet: 38/53 mm – Outlet: 25 mm

CD. 5500000912 Amp draw: 12A. - Voltage: 12V.

CD. 5500000824 Amp draw: 6A. - Voltage: 24V.



**GAS TANK VENT:**

CD.MN000ST005 Dim.15/16

**Y-VALVE**

A universal valve to discharge either overboard or into waste tanks designed for long distance control by means of a push-pull cable. It can be used in three ways: 1) the water from the toilet is flushed into the sea or into the waste tank;  
2) the water is discharged from the waste tank into the sea by means of a macerator or on the quay by means of a suction pump;

3) the macerator discharges into the sea or on the quay by means of a suction pump.

FITTING DETAILS: Connections for 38 mm (1 1/2") id. hose

CD. 6000100025

**DISCHARGE CONNECTIONS:**

Our discharge CONNECTION design allows for removal of waste from the top of the holding tank rather than near the bottom of the tank. This feature greatly reduces the opportunities for stagnant sewage to sit in tank discharge lines – a main cause of odor permeation and hose failure.

THIS CONNECTION MUST BE FIXED DIRECTLY TO THE MACERATOR HOSE : Inlet - 1-1/2" (38mm) Hose Barb and 1-1/4" .



**POLYTHENE WASTE TANKS:**Complete with 4 dead female unions 3/4" dim. 24/25 mm. and 4 dead female unions 1 1/4" dim 38/40 mm.for rubber gasket.

CD: 9100000547 47 lt. 470 x 400 x 250 mm - rectangular

CD: 9100000578 78 lt. 700 x 400 x 300 mm - rectangular

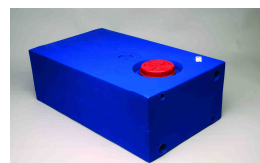
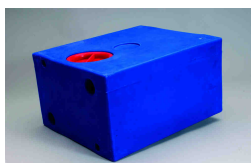
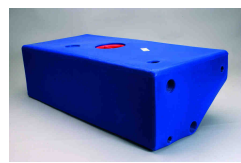
CD: 9100000578 78 lt 800 x 480 x 200 mm or 700X400X300- rectangular

CD: 9100005112 112 lt.700 x 800 x 200 mm - rectangular

CD: 9000000550 50 lt. 430 x 530 x 290 mm - rounded shape

CD: 9000000575 75 lt. 430 x 800 x 290 mm - rounded shape

CD: 9000000598 98 lt. 430 x 1000 x 290 mm - rounded shape



**VENTED LOOPS:** Indispensable component for inlet and discharge pipes of manual and electric toilets installed below the waterline. Manual and electric marine toilets flushed with sea or river water require connections through the hull below water level. If the toilet is installed below the boat waterline, the possibility of flooding the hull through an open seacock must be prevented, not only for the discharge pipe, but also for the inlet pipe. If no precautions are taken, a toilet below the waterline is at risk of flooding at all times when the discharge or inlet seacock is open A loop of pipe above water level may prevent flooding, but there remains a risk that a si phon will be created by pumping the toilet, or when the boats heels, or by wave action. Dia. 38 mm CD. 6000100015 IN-LET: 19 mm (3/4") DISCHARGE: 38 mm. (1 1/2")

**LEVEL INDICATORS:**Level indicators for clean waters and waste mixture tanks. Probes holder with 5 bushes in which are screwn 5 stainless steel probes for water tanks unit and 3 stainless steel probes for waste mixture tanks unit. Plastic bushes 20 mm long, to avoid risks of short

circuit due to humidity inside the tanks. A panel with a scale of 3 leds is advising the almost full tank with a buzzer, for the indicator of waste mixture tanks. Both holders and panels are for VDO connections.

CD. 4500000140 level indicator for waste mixture tanks.

